

## Omics RGB Prestained Protein Ladder

Cat. No. 02101-250

- Sharp and stable
- Two reference bands – red at ~75 kDa and green at ~25 kDa.
- Ready to use – no need to boil.
- 3 µl or 5 µl per loading for clear visualization during electrophoresis on 15-well or 10-well mini-gel, respectively
- 2 µl to 3 µl per well for general Western transferring

### Description

The Omics RGB Prestained Protein Ladder is a three-color protein standard with 10 pre-stained proteins covering a wide range molecular weights from 10 to 180 kDa. The ladder contains one red reference band at 75 kDa and one green band at 25 kDa. The Omics RGB Prestained Protein Ladder is designed for monitoring protein separated during SDS-polyacrylamide gel electrophoresis, verification of Western transfer efficiency on membranes (PVDF, nylon, or nitrocellulose) and for approximate sizing of proteins. The ladder is supplied in gel loading buffer and is ready-to-use. Do not heat, dilute, or add reducing agent before loading.

### Contents

0.2~0.4 mg/ml of each protein in 20 mM Trisphosphate (pH 7.5 at 25°C), 2% SDS, 1 mM 2-Mercaptoethanol, 3.6 M Urea, and 15% glycerol.

### Quality Control

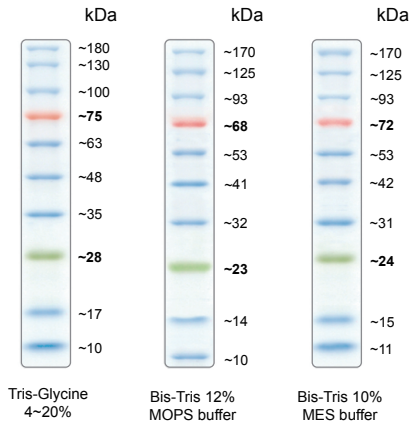
Tested in SDS-polyacrylamide gel electrophoresis and Western Blotting.

### Storage

Stable at 25°C for 2 weeks, at 4°C for 3 months and at -20°C for 24 months

[www.omicsbio.com](http://www.omicsbio.com)

### Migration patterns of AccuRuler Prestained Protein Ladder in different electrophoresis conditions



Note: The apparent molecular weight of each protein (kDa) has been determined by calibration against an unstained protein ladder in each electrophoresis condition.

[www.omicsbio.com](http://www.omicsbio.com)

All products are for research use only. Caution:  
Not intended for human or animal diagnostic or therapeutic uses.